

# C DOMINANT DIMINISHED SCALE

## ALL POSITIONS

1F 3F 5F 7F 9F 12F 15F 17F 19F 21F

## POSITION 1

1F 3F

## POSITION 2

3F 5F

## POSITION 3

5F 7F 9F

## POSITION 4

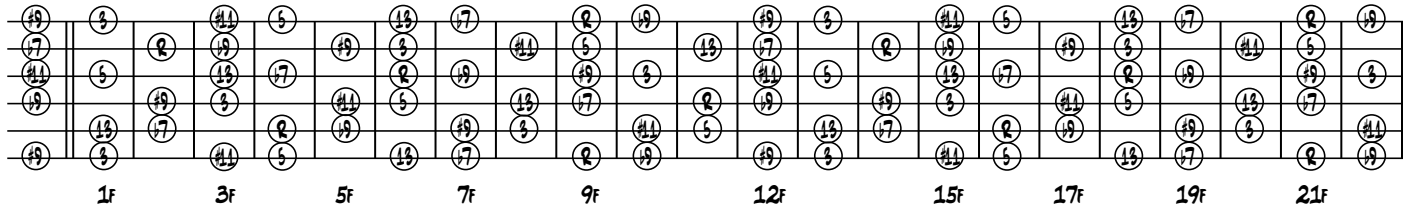
7F 9F

## POSITION 5

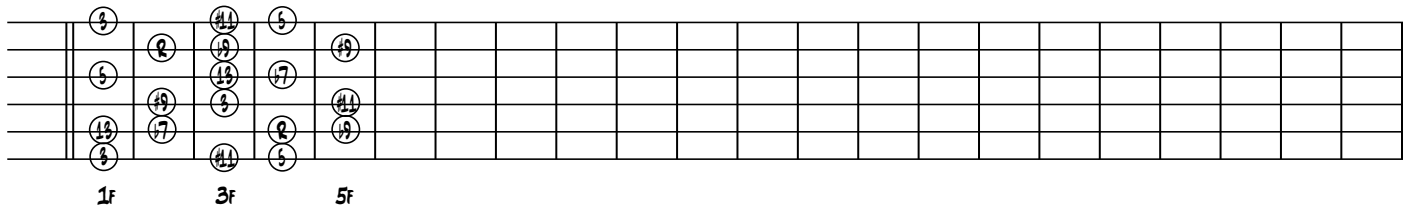
9F 12F

# C# AND D<sup>b</sup> DOMINANT DIMINISHED SCALE

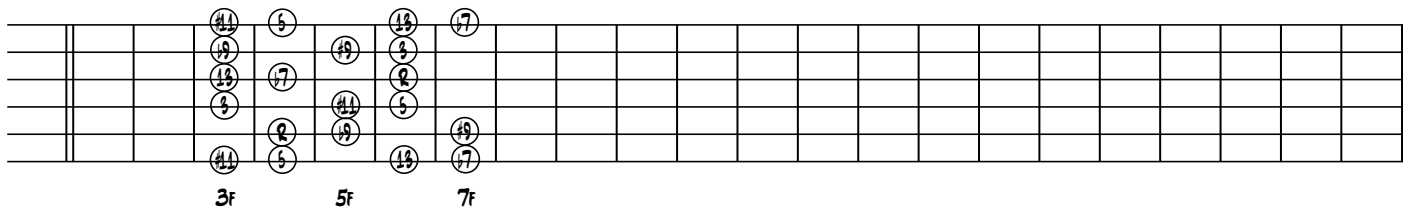
## ALL POSITIONS



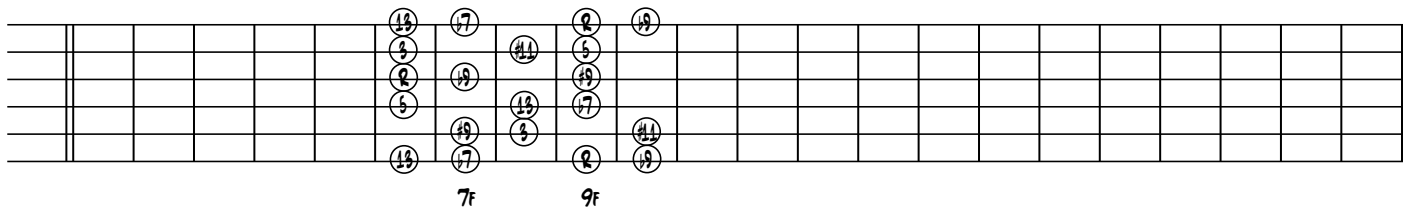
## POSITION 1



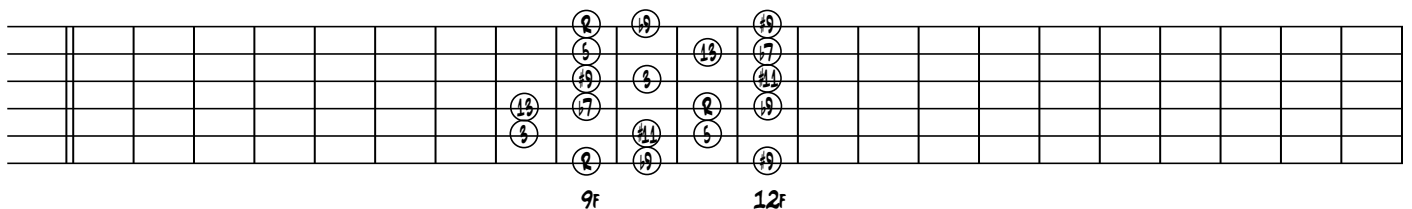
## POSITION 2



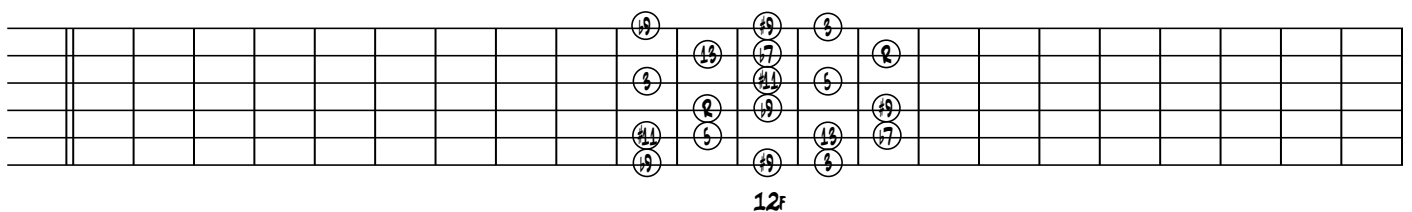
## POSITION 3



## POSITION 4



## POSITION 5



# D DOMINANT DIMINISHED SCALE

## ALL POSITIONS

1F      3F      5F      7F      9F      12F      15F      17F      19F      21F

## POSITION 1

3F      5F

## POSITION 2

5F      7F

## POSITION 3

7F      9F

## POSITION 4

9F      12F

## POSITION 5

12F      15F

# D# AND Eb DOMINANT DIMINISHED SCALE

## ALL POSITIONS

1f 3f 5f 7f 9f 12f 15f 17f 19f 21f

## POSITION 1

3f 5f 7f

## POSITION 2

5f 7f 9f

## POSITION 3

9f 12f

## POSITION 4

12f

## POSITION 5

1f 3f

# E DOMINANT DIMINISHED SCALE

## ALL POSITIONS

Diagram showing the E dominant diminished scale across 11 positions (1f, 3f, 5f, 7f, 9f, 12f, 15f, 17f, 19f, 21f) on a guitar fretboard. The scale notes are: E, F, G, A, B, C, D, E. Fingerings are indicated by circled numbers 1-4.

## POSITION 1

Diagram showing the E dominant diminished scale in Position 1, spanning frets 5f and 7f. Fingerings are indicated by circled numbers 1-4.

## POSITION 2

Diagram showing the E dominant diminished scale in Position 2, spanning frets 7f and 9f. Fingerings are indicated by circled numbers 1-4.

## POSITION 3

Diagram showing the E dominant diminished scale in Position 3, spanning frets 9f and 12f. Fingerings are indicated by circled numbers 1-4.

## POSITION 4

Diagram showing the E dominant diminished scale in Position 4, spanning frets 12f and 15f. Fingerings are indicated by circled numbers 1-4.

## POSITION 5

Diagram showing the E dominant diminished scale in Position 5, spanning frets 1f, 3f, and 5f. Fingerings are indicated by circled numbers 1-4.

# F DOMINANT DIMINISHED SCALE

## ALL POSITIONS

Diagram showing all positions of the F dominant diminished scale across the fretboard from 1st to 21st fret. The scale is represented by a grid of notes on six strings. The notes are: 1F (1, 2, 3, 4, 5, 6), 3F (3, 4, 5, 6, 7, 8), 5F (5, 6, 7, 8, 9, 10), 7F (7, 8, 9, 10, 11, 12), 9F (9, 10, 11, 12, 13, 14), 12F (12, 13, 14, 15, 16, 17), 15F (15, 16, 17, 18, 19, 20), 17F (17, 18, 19, 20, 21, 22), 19F (19, 20, 21, 22, 23, 24), and 21F (21, 22, 23, 24, 25, 26).

## POSITION 1

Diagram of Position 1 of the F dominant diminished scale, spanning frets 5 to 9. The notes are: 5F (5, 6, 7, 8, 9, 10), 7F (7, 8, 9, 10, 11, 12), and 9F (9, 10, 11, 12, 13, 14).

## POSITION 2

Diagram of Position 2 of the F dominant diminished scale, spanning frets 7 to 9. The notes are: 7F (7, 8, 9, 10, 11, 12) and 9F (9, 10, 11, 12, 13, 14).

## POSITION 3

Diagram of Position 3 of the F dominant diminished scale, spanning frets 12 to 13. The notes are: 12F (12, 13, 14, 15, 16, 17) and 13F (13, 14, 15, 16, 17, 18).

## POSITION 4

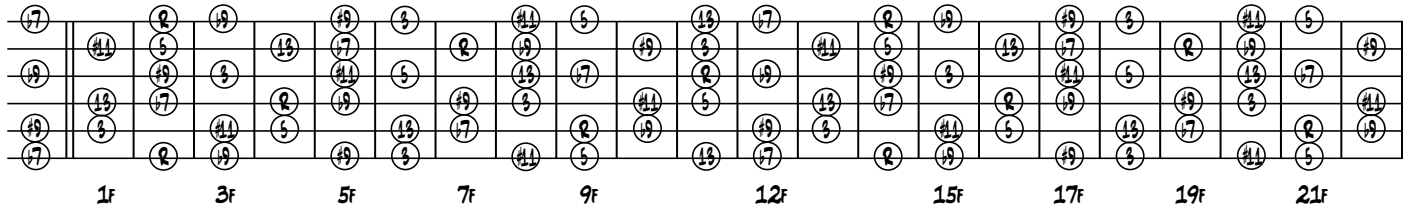
Diagram of Position 4 of the F dominant diminished scale, spanning frets 1 to 3. The notes are: 1F (1, 2, 3, 4, 5, 6) and 3F (3, 4, 5, 6, 7, 8).

## POSITION 5

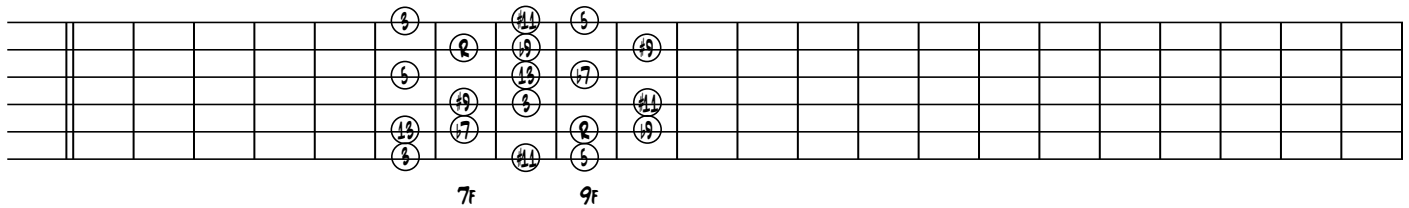
Diagram of Position 5 of the F dominant diminished scale, spanning frets 3 to 5. The notes are: 3F (3, 4, 5, 6, 7, 8) and 5F (5, 6, 7, 8, 9, 10).

# F# AND Gb DOMINANT DIMINISHED SCALE

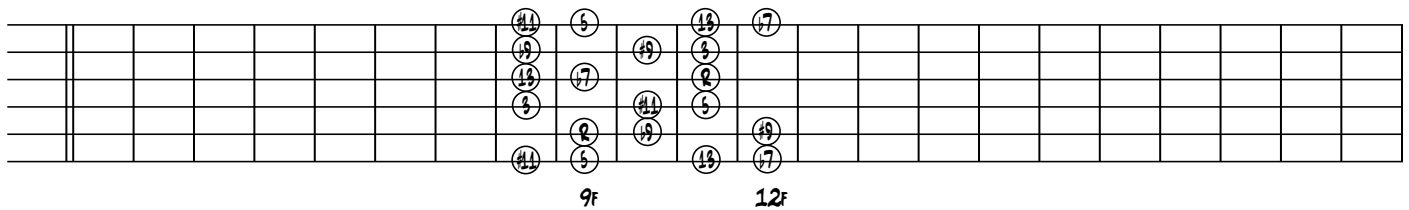
## ALL POSITIONS



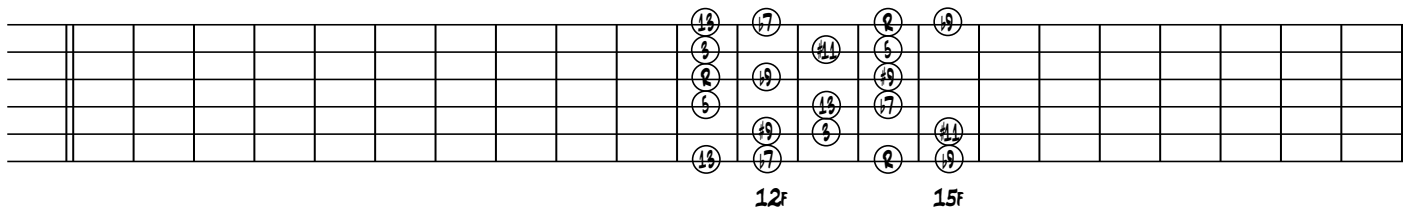
## POSITION 1



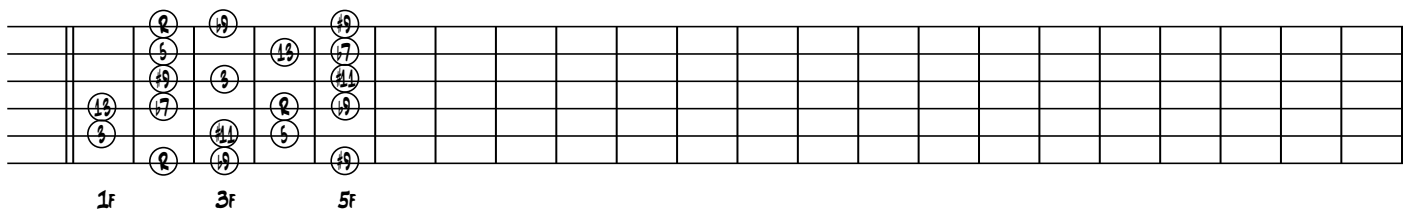
## POSITION 2



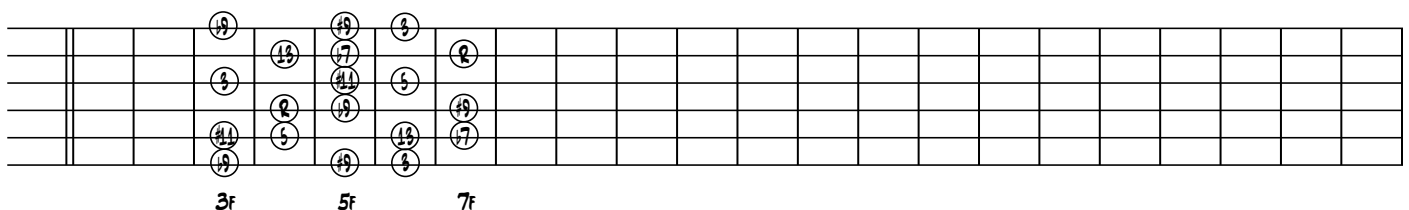
## POSITION 3



## POSITION 4



## POSITION 5



# G DOMINANT DIMINISHED SCALE

## ALL POSITIONS

Diagram showing the G dominant diminished scale across 11 positions (1f, 3f, 5f, 7f, 9f, 12f, 15f, 17f, 19f, 21f) on a guitar fretboard. The notes are circled and labeled with their respective fret numbers.

## POSITION 1

Diagram showing Position 1 of the G dominant diminished scale, spanning frets 7f and 9f. The notes are circled and labeled with their respective fret numbers.

## POSITION 2

Diagram showing Position 2 of the G dominant diminished scale, spanning frets 9f and 12f. The notes are circled and labeled with their respective fret numbers.

## POSITION 3

Diagram showing Position 3 of the G dominant diminished scale, spanning frets 1f and 3f. The notes are circled and labeled with their respective fret numbers.

## POSITION 4

Diagram showing Position 4 of the G dominant diminished scale, spanning frets 3f and 5f. The notes are circled and labeled with their respective fret numbers.

## POSITION 5

Diagram showing Position 5 of the G dominant diminished scale, spanning frets 5f and 7f. The notes are circled and labeled with their respective fret numbers.



# G# AND A<sup>b</sup> DOMINANT DIMINISHED SCALE

## ALL POSITIONS

## POSITION 1

## POSITION 2

## POSITION 3

## POSITION 4

## POSITION 5

# A DOMINANT DIMINISHED SCALE

## ALL POSITIONS

Diagram showing the dominant diminished scale across 21 frets. The scale notes are: 5, 7, 9, 11, 13, 15, 17, 19, 21. The diagram shows these notes in various positions across the fretboard, with fingerings indicated by numbers 1-4 in circles.

## POSITION 1

Diagram showing Position 1 of the dominant diminished scale. The notes are located between frets 9 and 12. Fingerings are indicated by numbers 1-4 in circles.

## POSITION 2

Diagram showing Position 2 of the dominant diminished scale. The notes are located between frets 12 and 15. Fingerings are indicated by numbers 1-4 in circles.

## POSITION 3

Diagram showing Position 3 of the dominant diminished scale. The notes are located between frets 3 and 5. Fingerings are indicated by numbers 1-4 in circles.

## POSITION 4

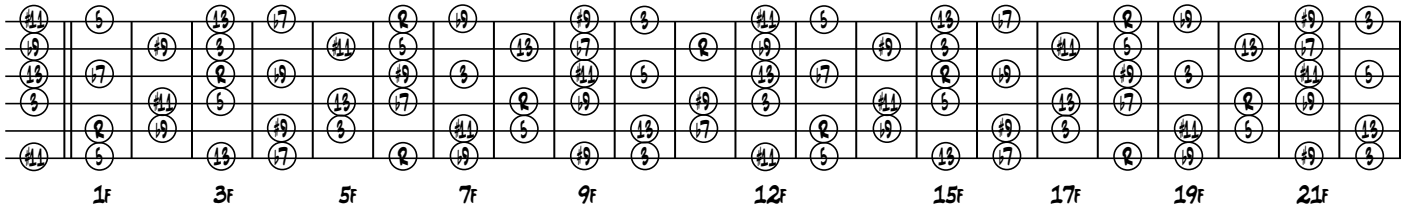
Diagram showing Position 4 of the dominant diminished scale. The notes are located between frets 5 and 7. Fingerings are indicated by numbers 1-4 in circles.

## POSITION 5

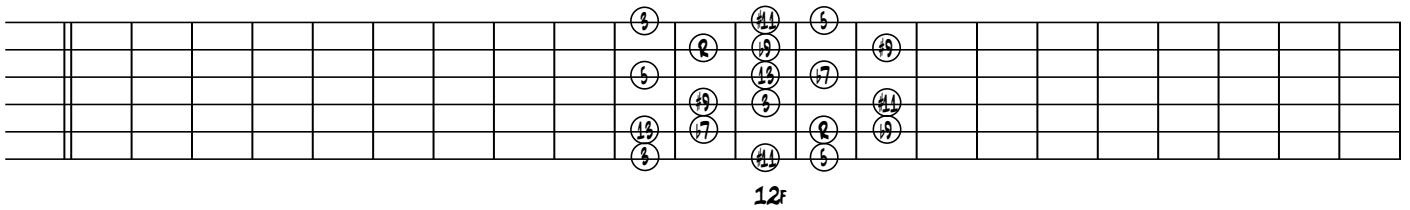
Diagram showing Position 5 of the dominant diminished scale. The notes are located between frets 7 and 9. Fingerings are indicated by numbers 1-4 in circles.

# A# AND Bb DOMINANT DIMINISHED SCALE

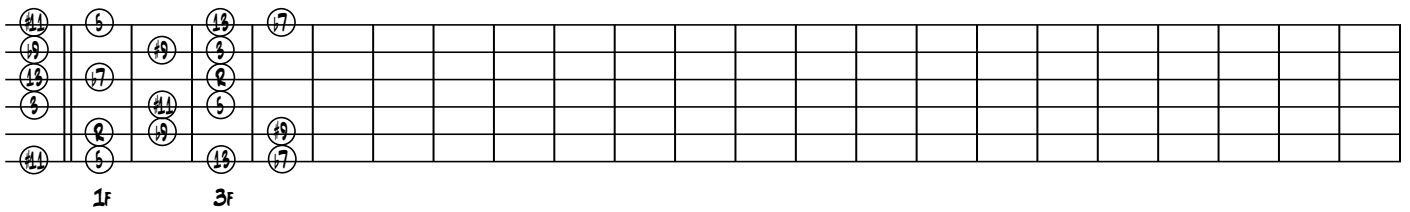
## ALL POSITIONS



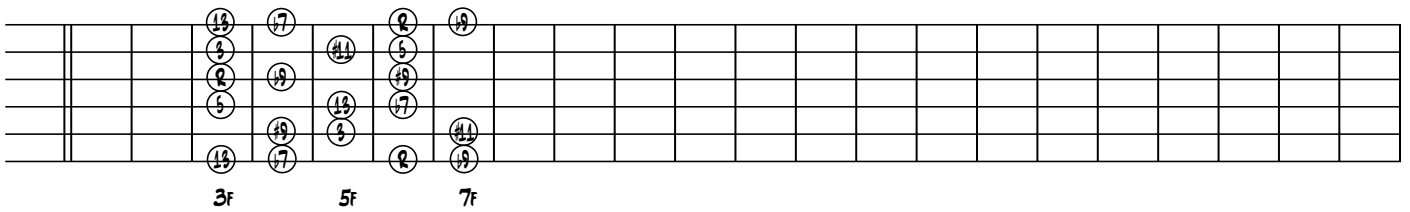
## POSITION 1



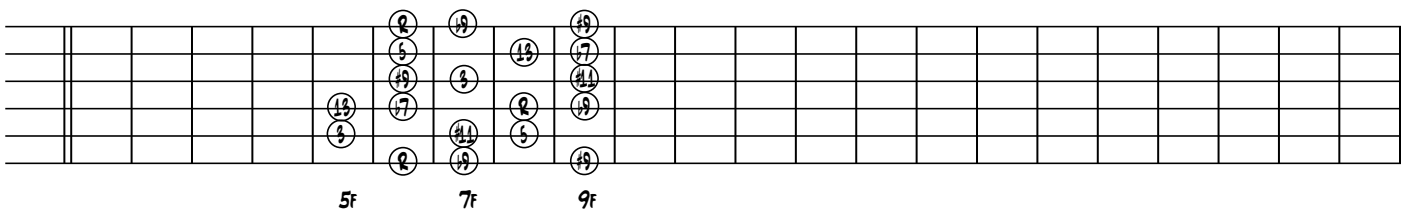
## POSITION 2



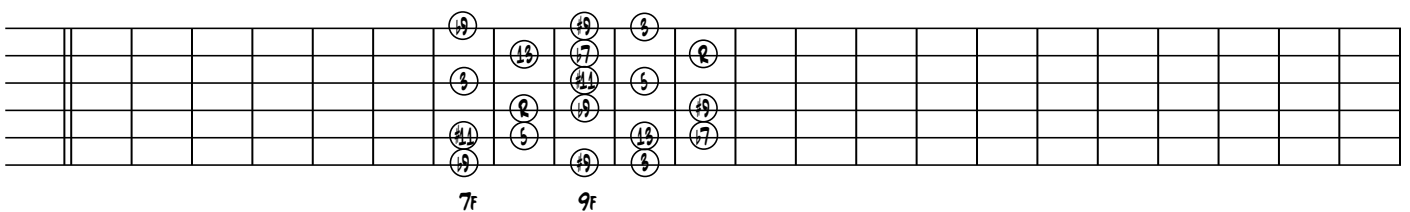
## POSITION 3



## POSITION 4



## POSITION 5



# B DOMINANT DIMINISHED SCALE

## ALL POSITIONS

A diagram of the guitar fretboard showing the B Dominant Diminished Scale in all positions. The scale is represented by circled numbers on the strings. Positions are labeled below the fretboard: 1f, 3f, 5f, 7f, 9f, 12f, 15f, 17f, 19f, and 21f.

## POSITION 1

A diagram showing Position 1 of the B Dominant Diminished Scale. The scale is represented by circled numbers on the strings. The position is labeled below the fretboard: 12f and 15f.

## POSITION 2

A diagram showing Position 2 of the B Dominant Diminished Scale. The scale is represented by circled numbers on the strings. The position is labeled below the fretboard: 1f, 3f, and 5f.

## POSITION 3

A diagram showing Position 3 of the B Dominant Diminished Scale. The scale is represented by circled numbers on the strings. The position is labeled below the fretboard: 5f and 7f.

## POSITION 4

A diagram showing Position 4 of the B Dominant Diminished Scale. The scale is represented by circled numbers on the strings. The position is labeled below the fretboard: 7f and 9f.

## POSITION 5

A diagram showing Position 5 of the B Dominant Diminished Scale. The scale is represented by circled numbers on the strings. The position is labeled below the fretboard: 9f and 12f.