

C PHRYGIAN SCALE

ALL POSITIONS

POSITION 1

POSITION 2

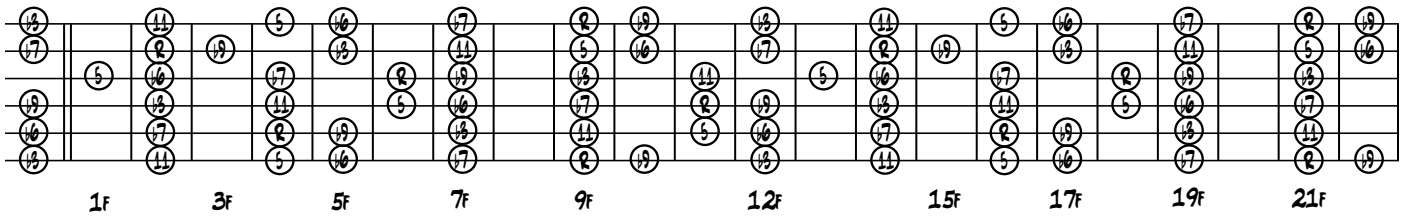
POSITION 3

POSITION 4

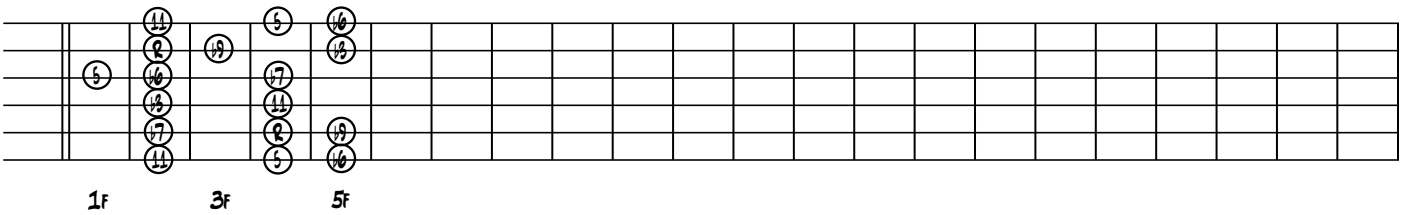
POSITION 5

C# AND D^b PHRYGIAN SCALE

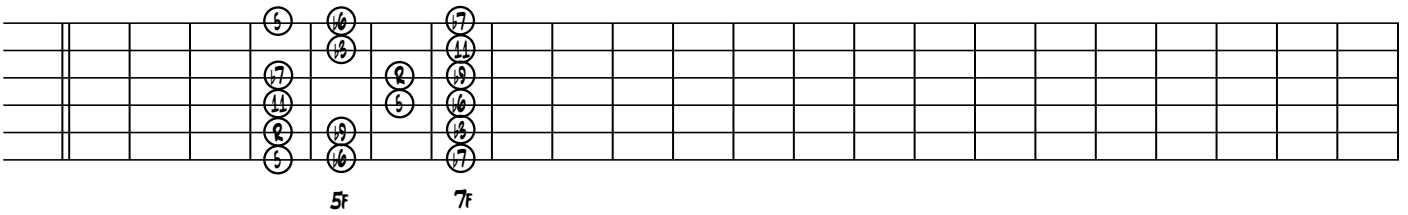
ALL POSITIONS



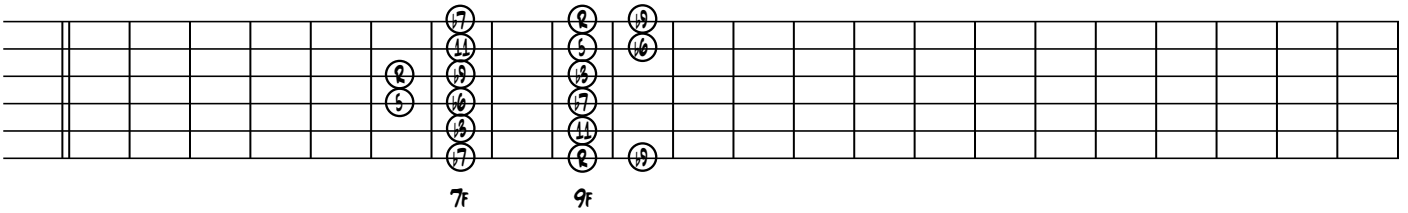
POSITION 1



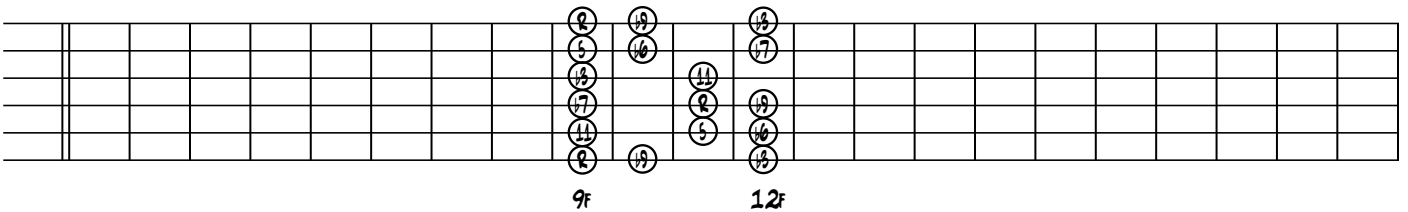
POSITION 2



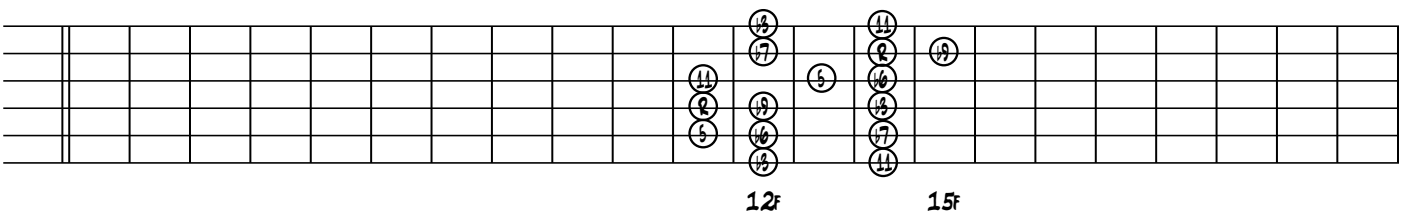
POSITION 3



POSITION 4



POSITION 5



D PHRYGIAN SCALE

ALL POSITIONS

Diagram showing 11 fret positions for the D Phrygian scale. Each position is represented by a 6-string grid with circles containing numbers 1-7 indicating fingerings. The positions are labeled 1F, 3F, 5F, 7F, 9F, 12F, 15F, 17F, 19F, and 21F.

POSITION 1

Diagram showing Position 1 for the D Phrygian scale. Fingerings are indicated by circles with numbers 1-7. The scale starts at the 3rd fret and ends at the 5th fret. Labels '3F' and '5F' are placed below the fretboard.

POSITION 2

Diagram showing Position 2 for the D Phrygian scale. Fingerings are indicated by circles with numbers 1-7. The scale starts at the 5th fret and ends at the 7th fret. Labels '5F' and '7F' are placed below the fretboard.

POSITION 3

Diagram showing Position 3 for the D Phrygian scale. Fingerings are indicated by circles with numbers 1-7. The scale starts at the 7th fret and ends at the 9th fret. Labels '7F' and '9F' are placed below the fretboard.

POSITION 4

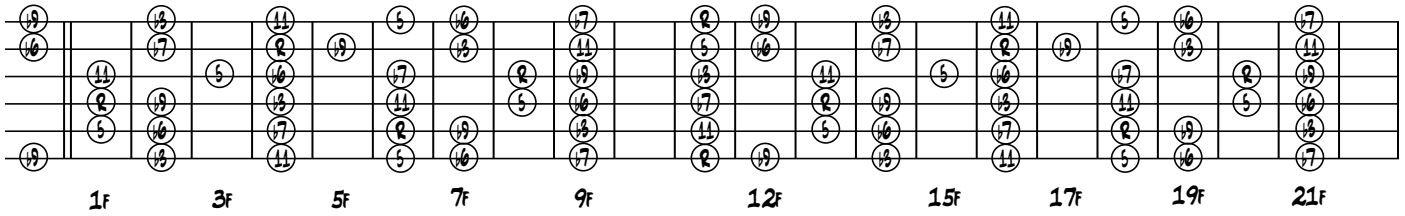
Diagram showing Position 4 for the D Phrygian scale. Fingerings are indicated by circles with numbers 1-7. The scale starts at the 12th fret and ends at the 12th fret. Label '12F' is placed below the fretboard.

POSITION 5

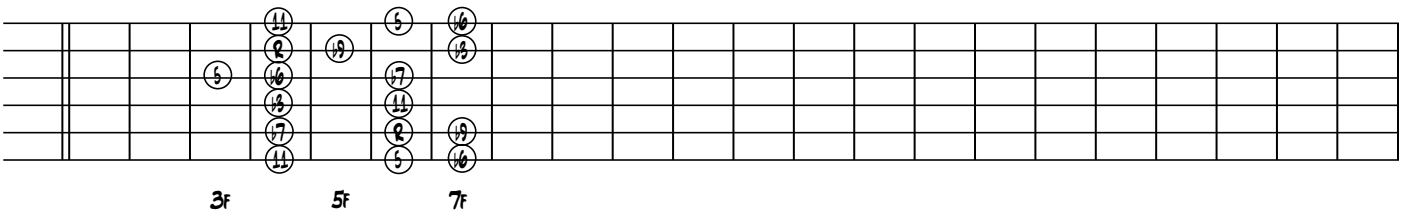
Diagram showing Position 5 for the D Phrygian scale. Fingerings are indicated by circles with numbers 1-7. The scale starts at the 1st fret and ends at the 3rd fret. Labels '1F' and '3F' are placed below the fretboard.

D# AND Eb PHYRGIAN SCALE

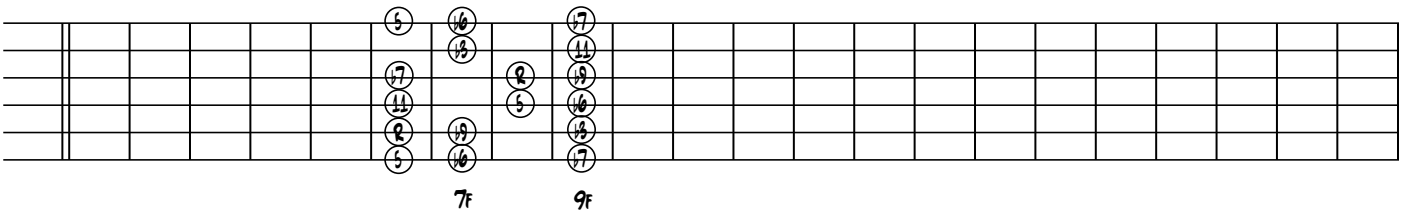
ALL POSITIONS



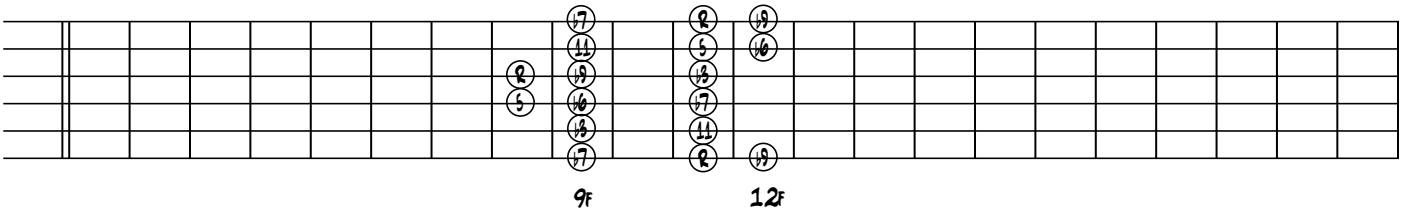
POSITION 1



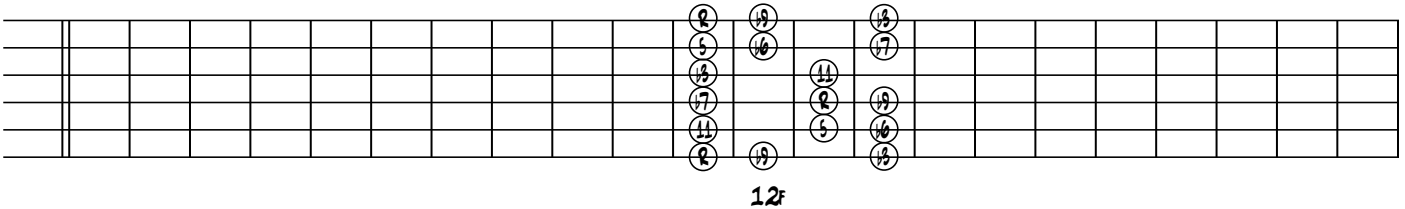
POSITION 2



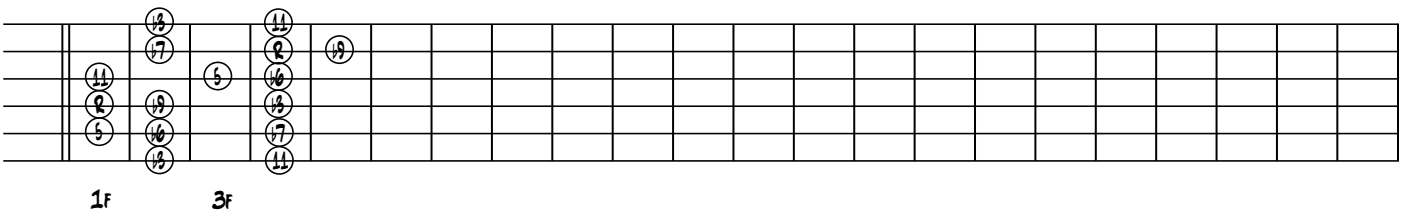
POSITION 3



POSITION 4

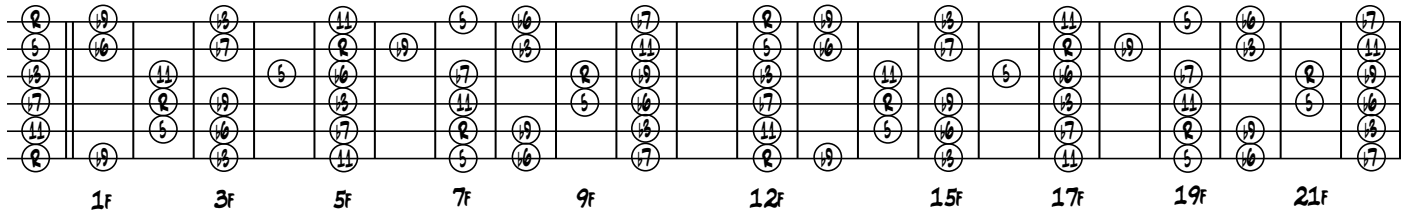


POSITION 5

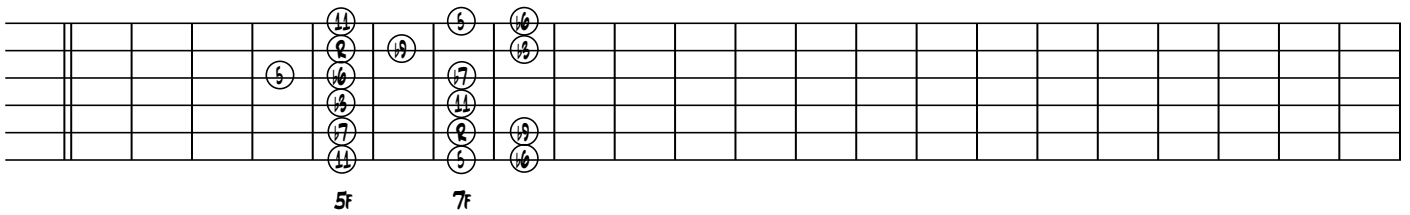


E PHRYGIAN SCALE

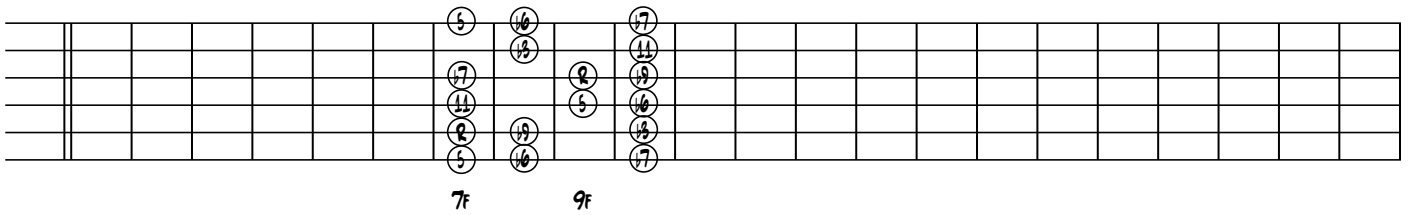
ALL POSITIONS



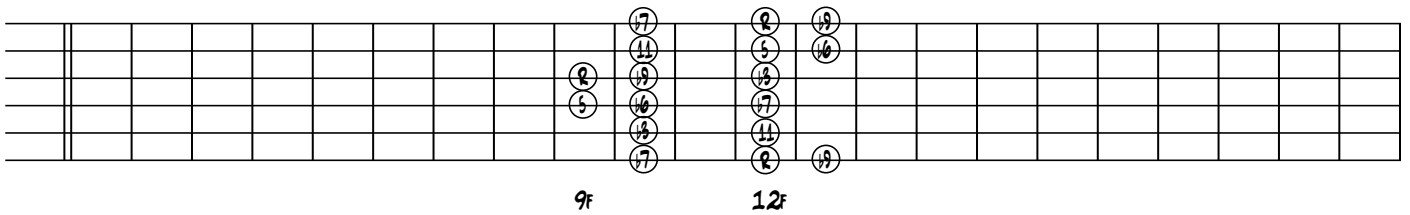
POSITION 1



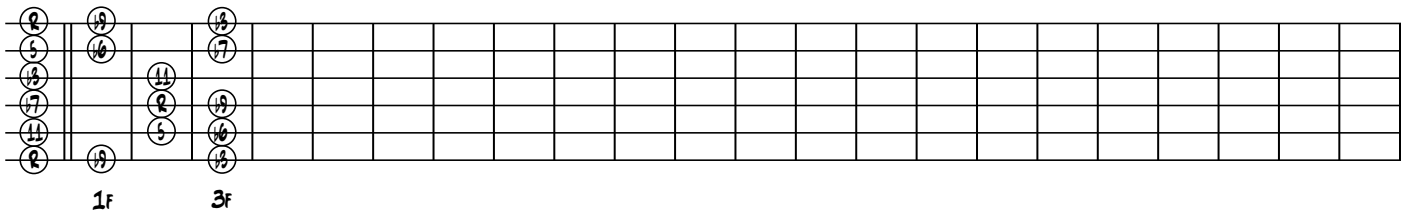
POSITION 2



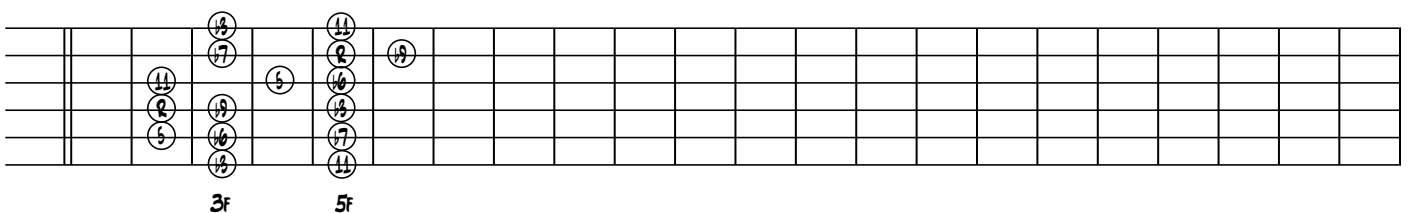
POSITION 3



POSITION 4

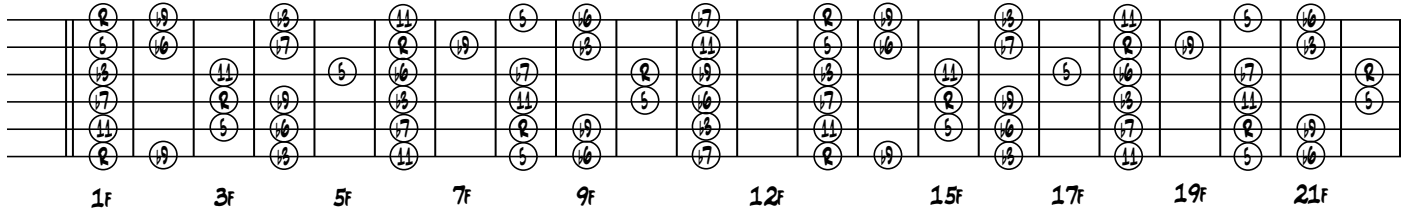


POSITION 5

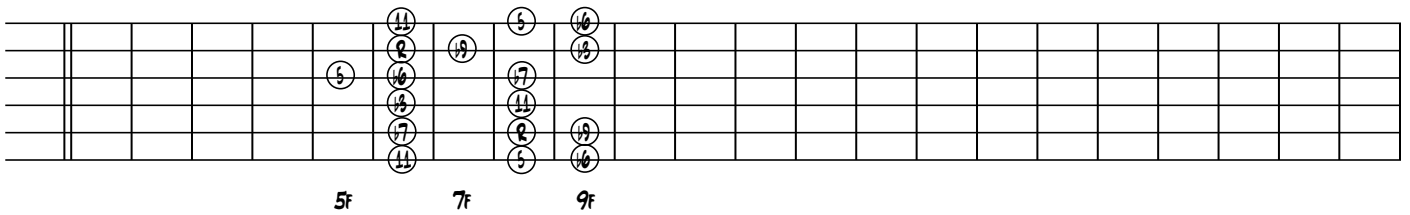


F PHYGIAN SCALE

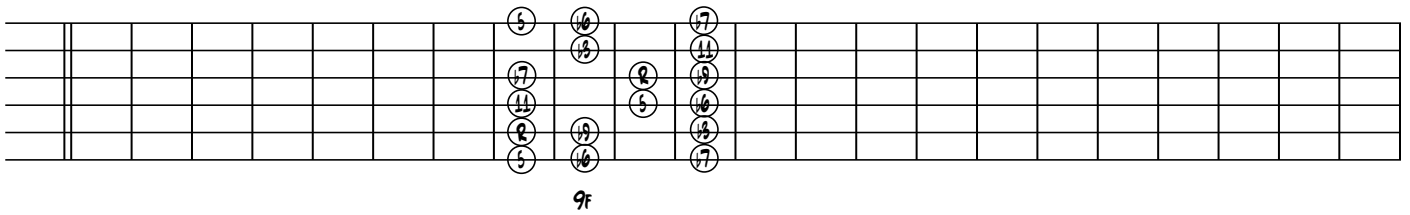
ALL POSITIONS



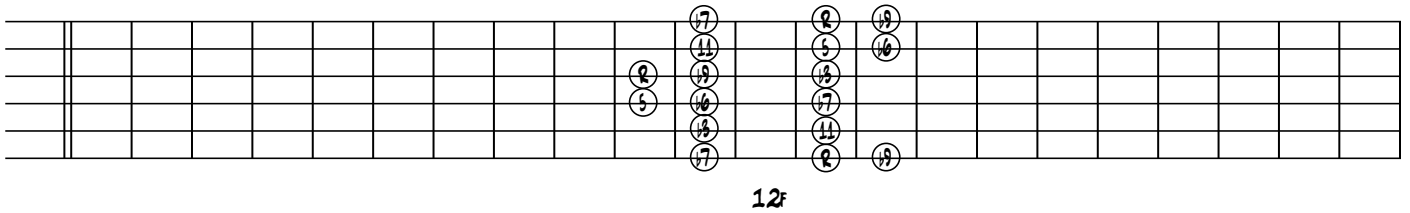
POSITION 1



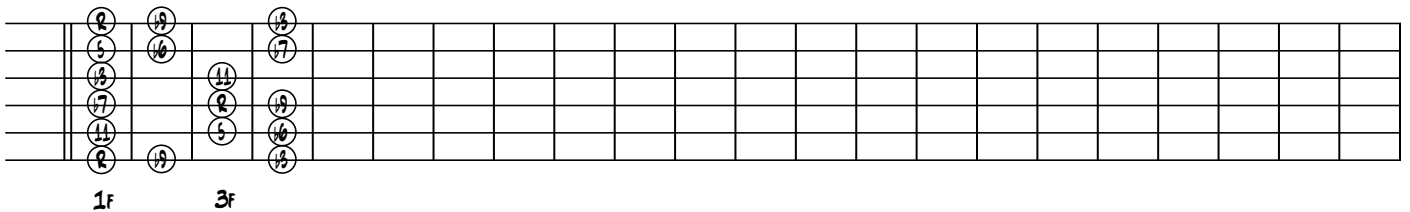
POSITION 2



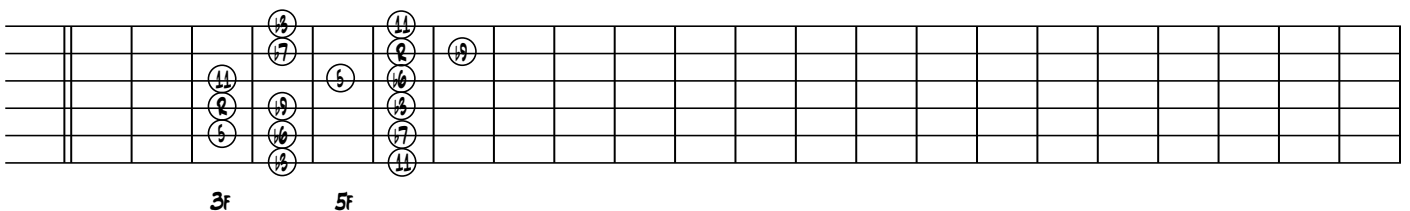
POSITION 3



POSITION 4

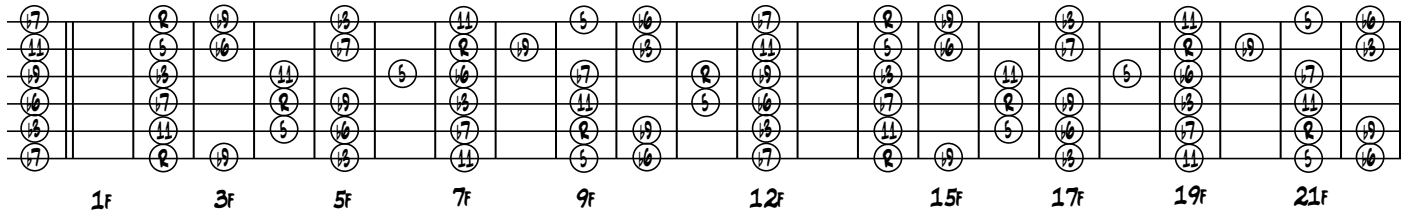


POSITION 5

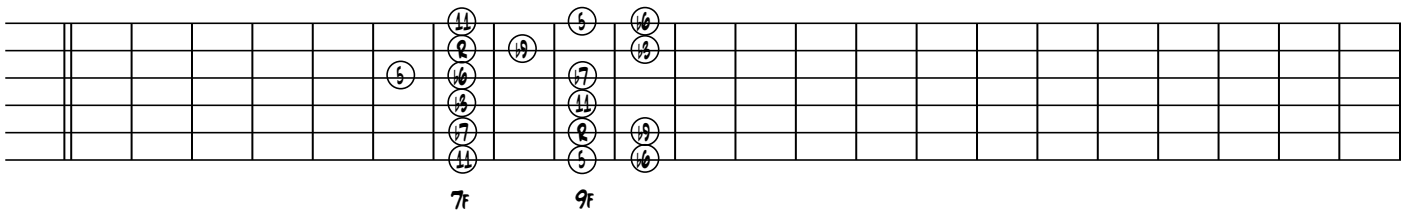


F# AND Gb PHRYGIAN SCALE

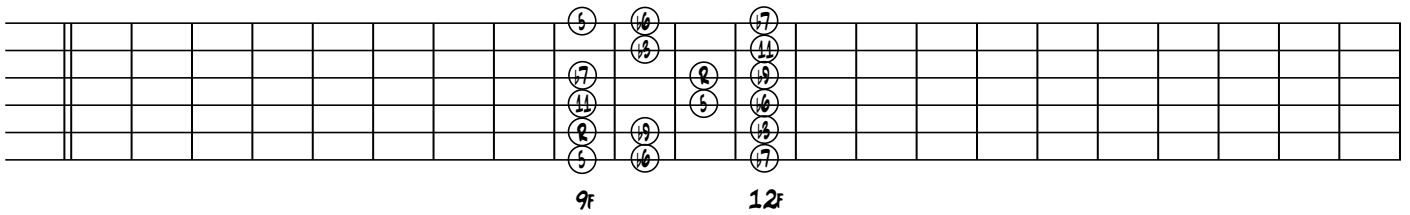
ALL POSITIONS



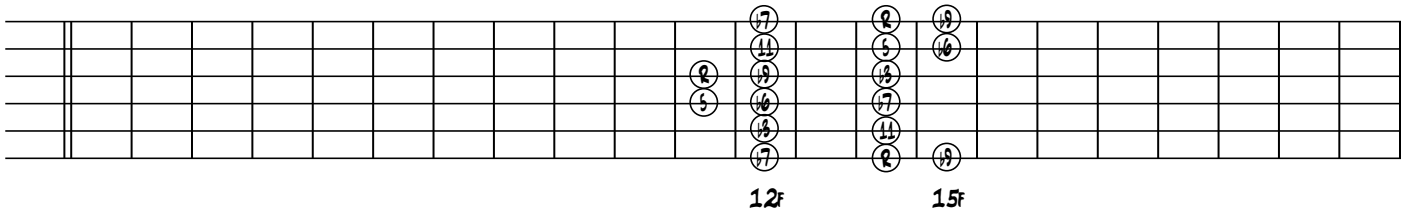
POSITION 1



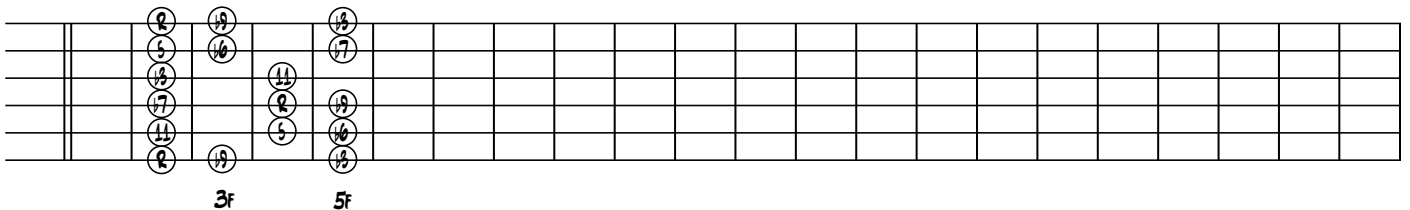
POSITION 2



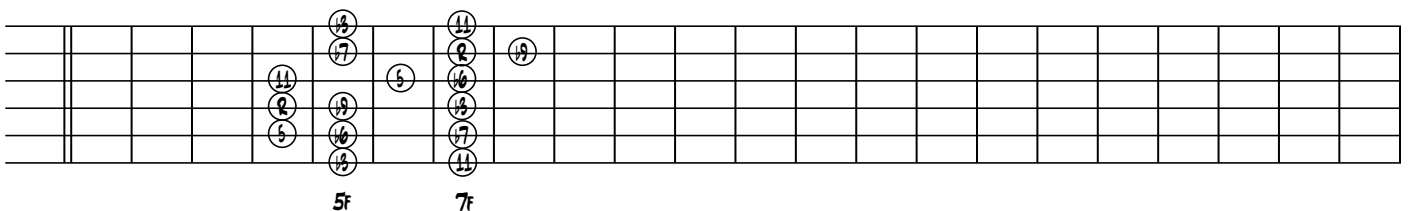
POSITION 3



POSITION 4

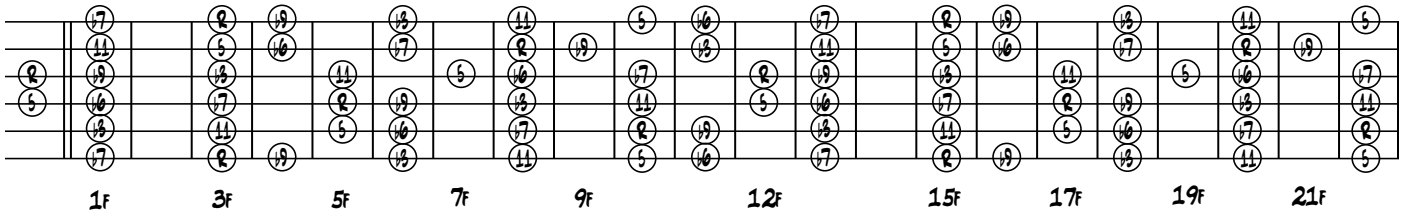


POSITION 5

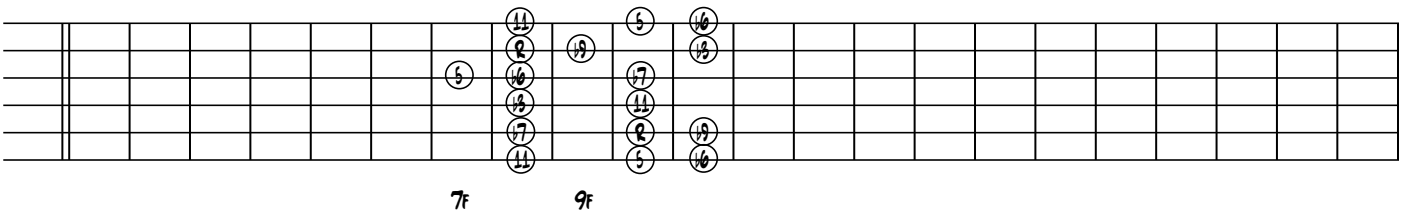


G PHYGIAN SCALE

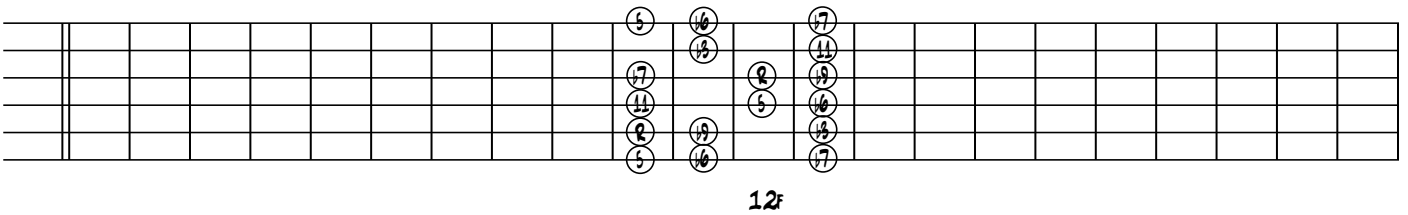
ALL POSITIONS



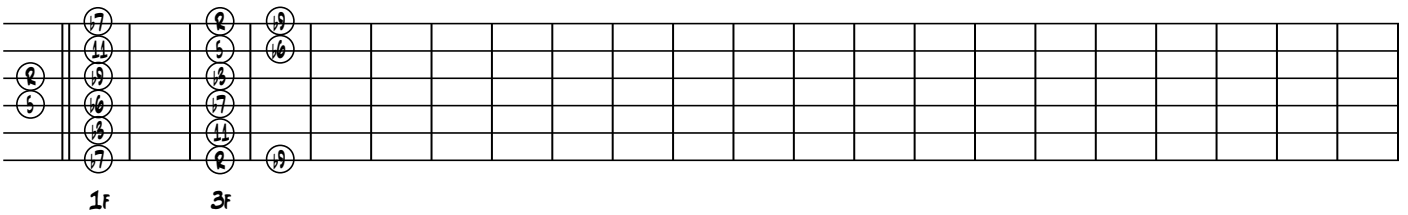
POSITION 1



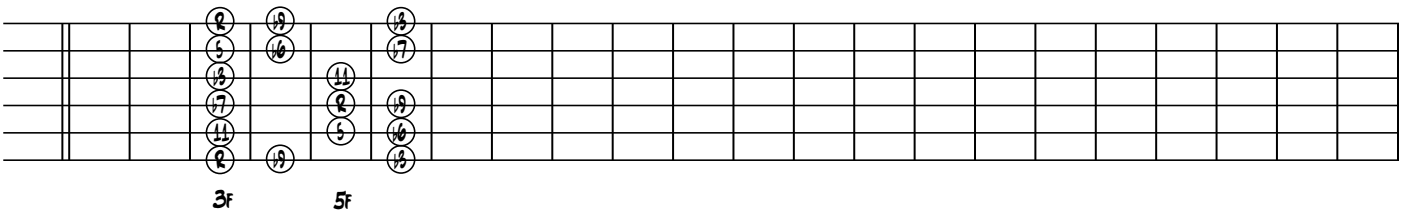
POSITION 2



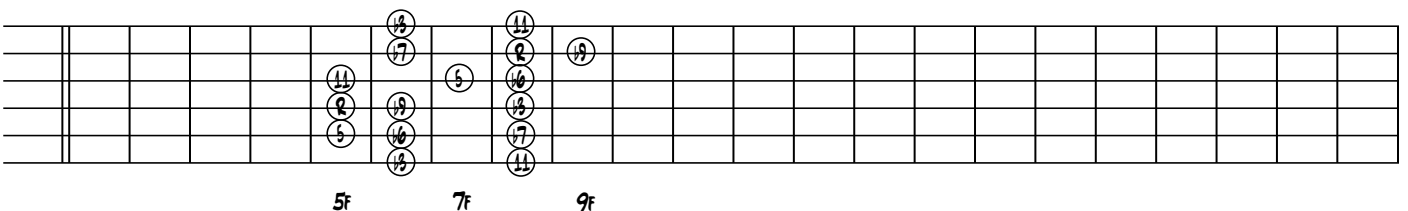
POSITION 3



POSITION 4

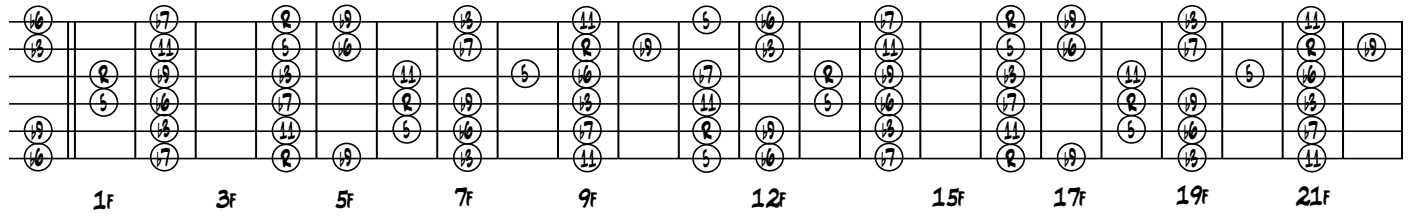


POSITION 5

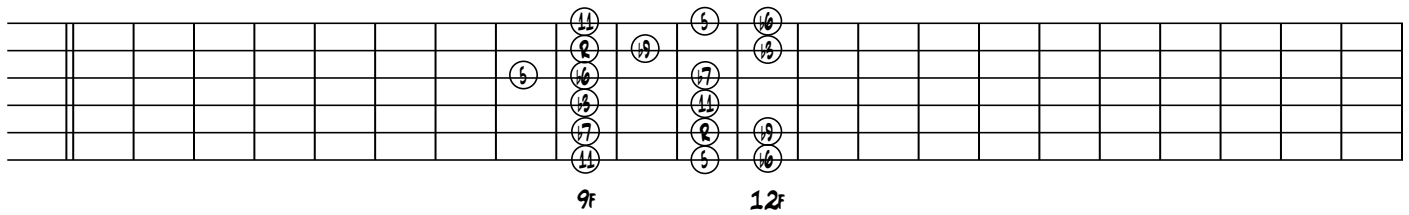


G# AND A^b PHRYGIAN SCALE

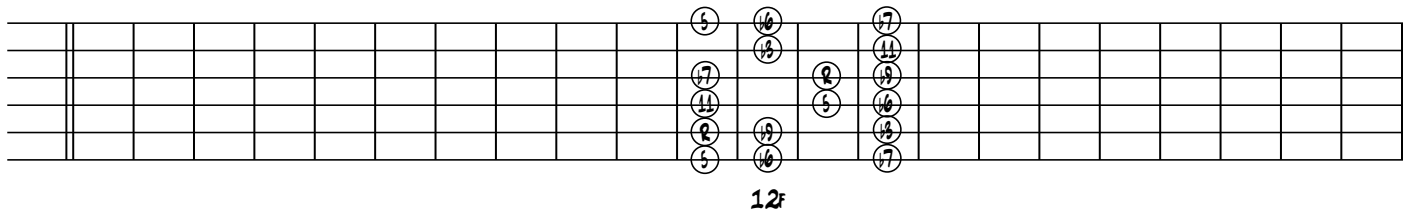
ALL POSITIONS



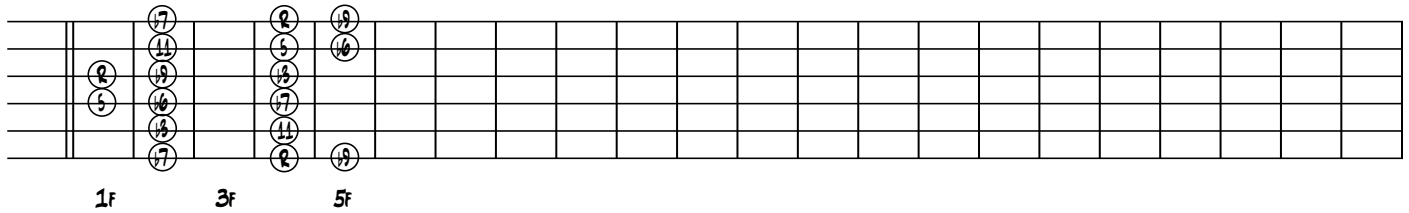
POSITION 1



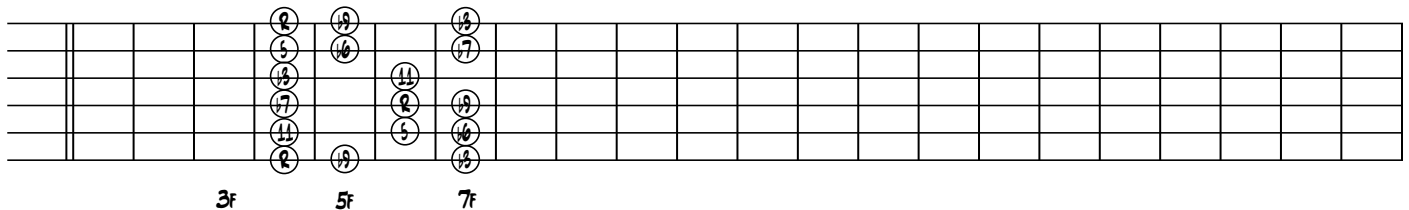
POSITION 2



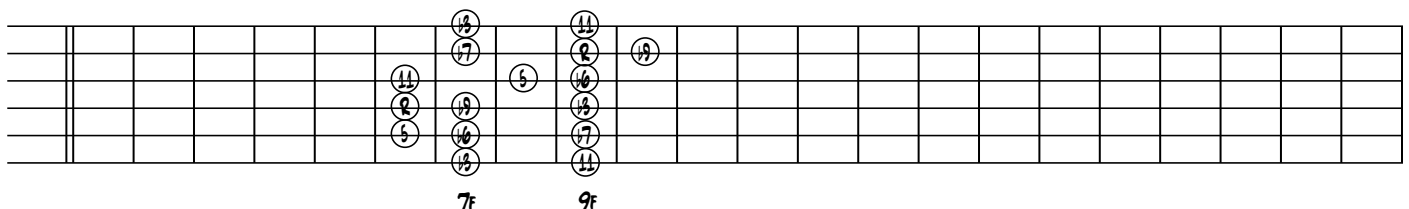
POSITION 3



POSITION 4

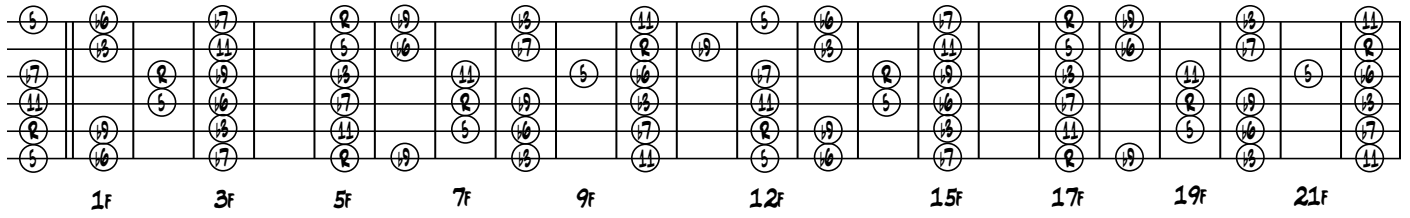


POSITION 5

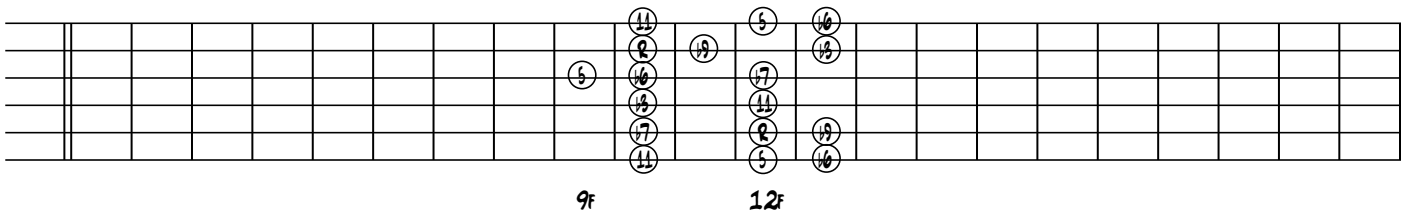


A PHRYGIAN SCALE

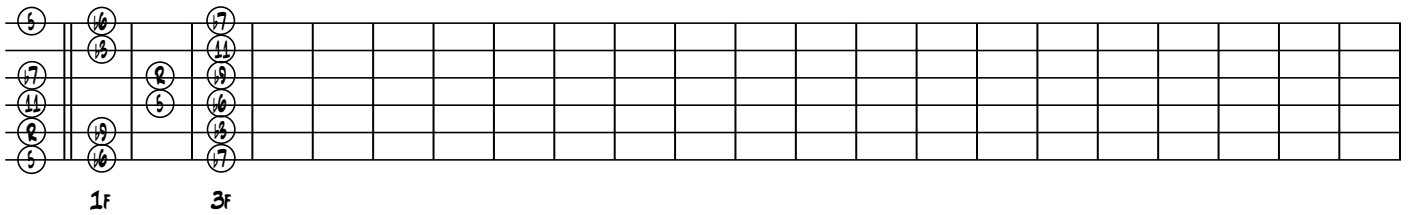
ALL POSITIONS



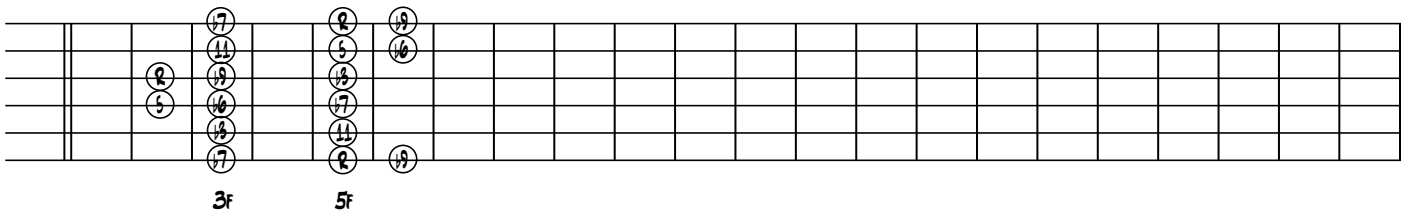
POSITION 1



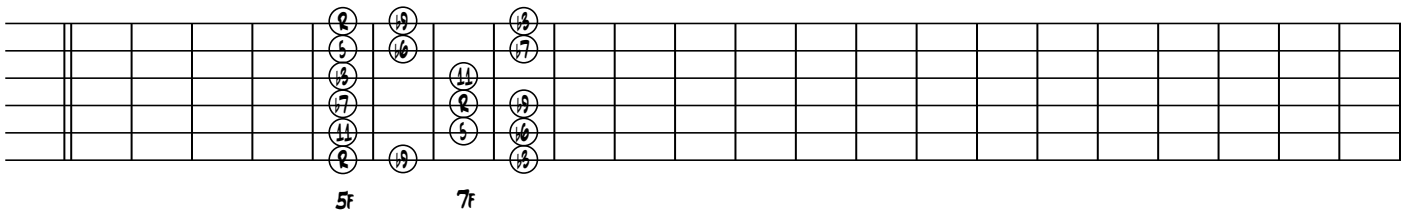
POSITION 2



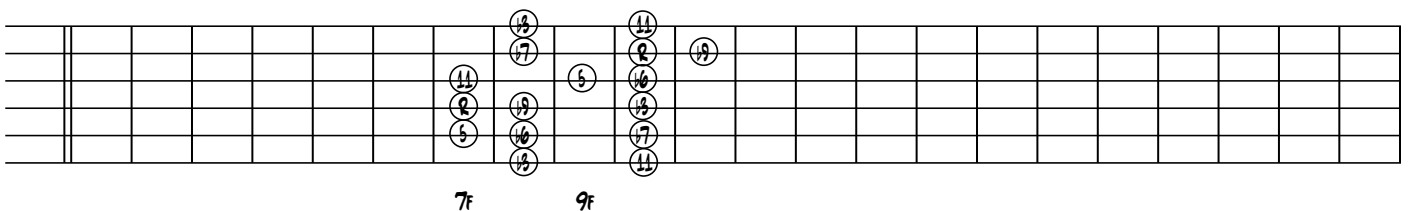
POSITION 3



POSITION 4

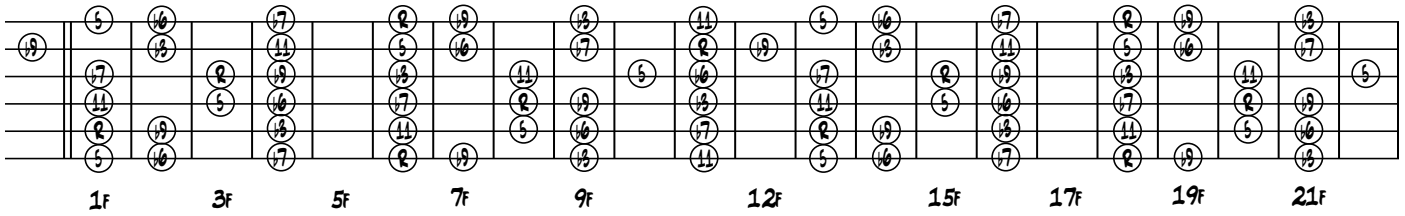


POSITION 5

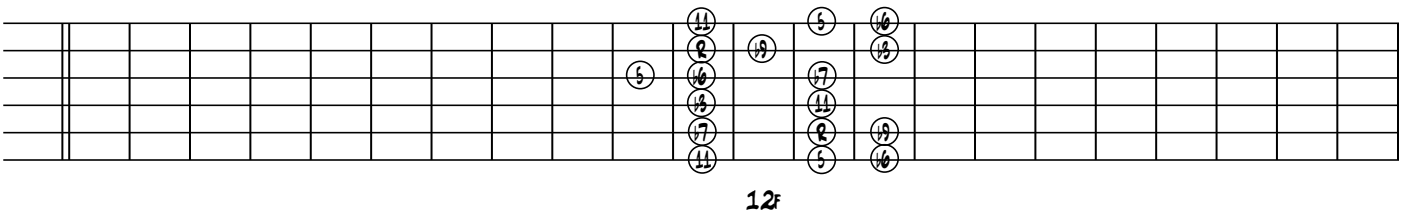


A# AND Bb PHRYGIAN SCALE

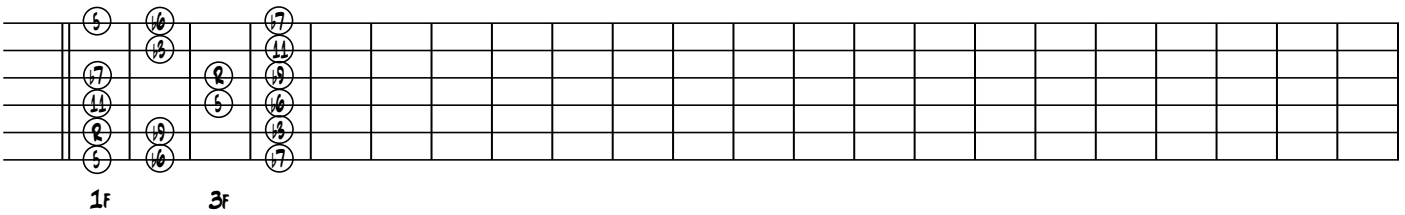
ALL POSITIONS



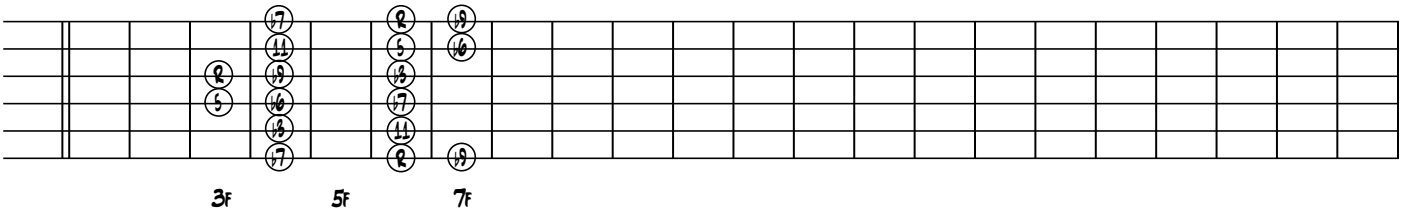
POSITION 1



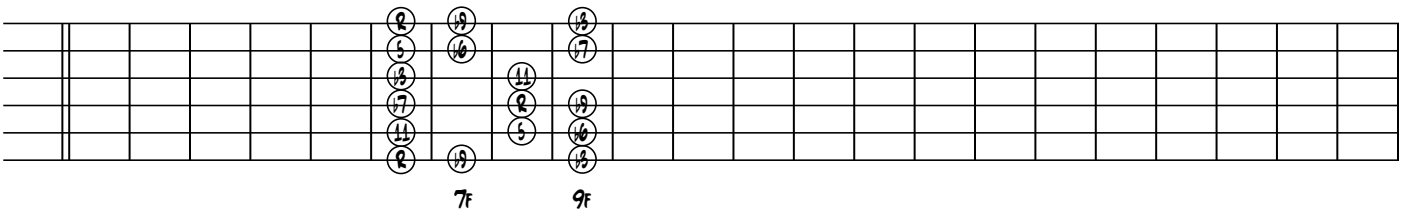
POSITION 2



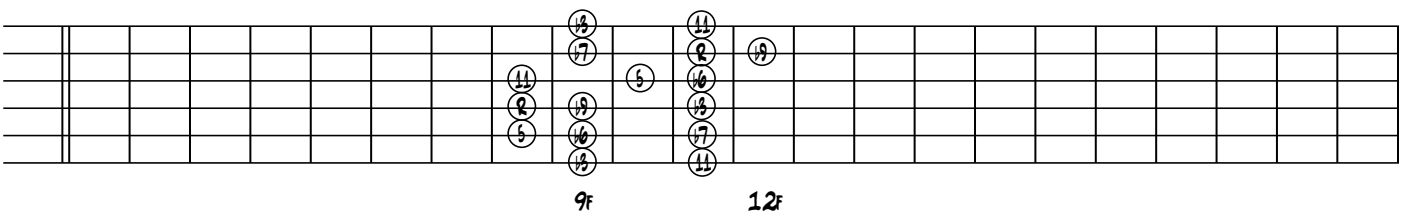
POSITION 3



POSITION 4

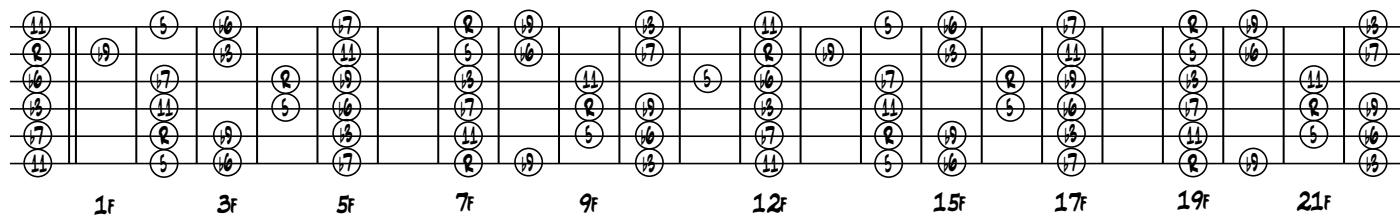


POSITION 5

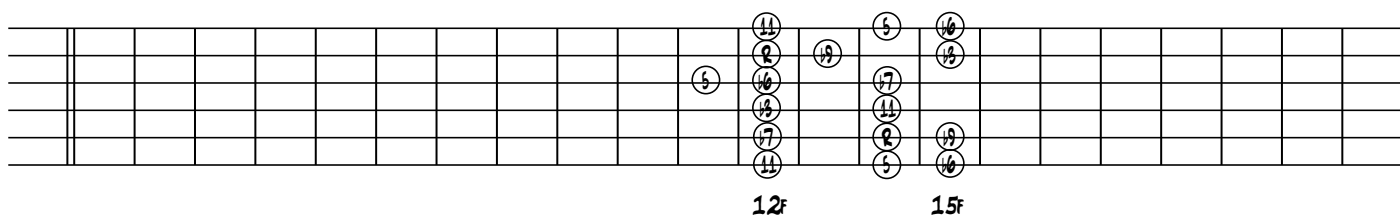


B PHRYGIAN SCALE

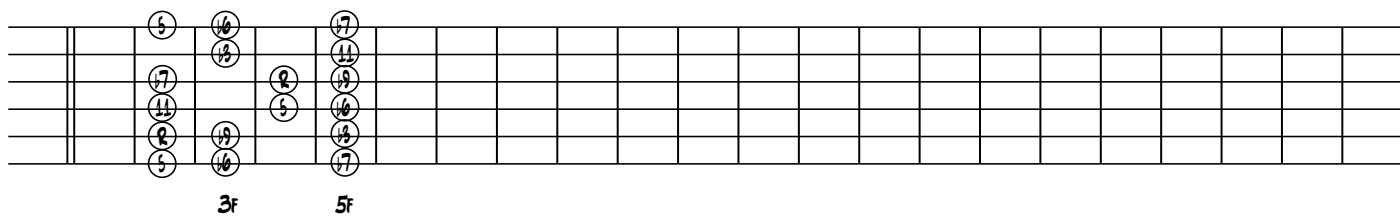
ALL POSITIONS



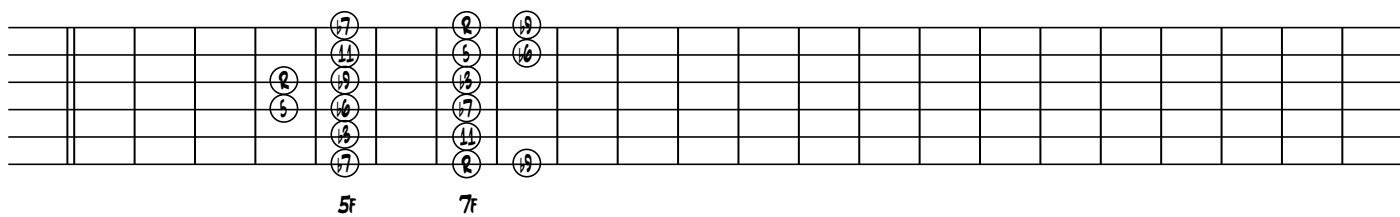
POSITION 1



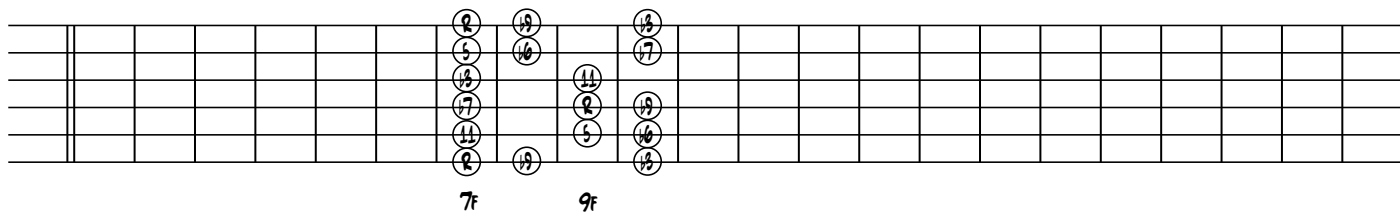
POSITION 2



POSITION 3



POSITION 4



POSITION 5

